



£165,000 Guide Price

Eleanor Street, Sheffield

Terraced House | 3 Bedrooms | 2 Bathrooms

0114 470 1013



www.waveletsproperty.co.uk



WAVELETS

Step Inside

Key Features

- Guide Price £165,000 - £175,000
- Three Bed Mid-Terrace House
- GARAGE & DRIVE FOR TWO VEHICLES
- Spacious Kitchen Dining Area
- Well Presented Interior
- Perfect For A Small Family Or A Buy To Let Investment
- POSSIBLE GARAGE CONVERSION
- Local Amenities In The Surrounding Area
- Easy Access To Sheffield City Centre
- Close to the M1 and Meadowhall

Property Description

Guide Price £165,000 - £175,000

Nestled on the charming Eleanor Street in Sheffield, this delightful three-bedroom mid-terrace house offers a perfect blend of modern living and comfort.

Built in 2008, the property boasts a well-presented interior that is sure to impress. The spacious layout is ideal for a small family seeking a welcoming home or for those considering a buy-to-let investment.

As you step inside, you will be greeted by a bright and airy atmosphere, with ample space for relaxation and entertaining.

The property features three generously sized bedrooms, providing plenty of room for family members or guests.

The well-appointed kitchen and living areas create a warm and inviting environment, perfect for everyday living.

One of the standout features of this home is the garage, which not only offers convenient parking but also presents an exciting opportunity for a potential garage conversion, allowing you to tailor the space to your needs. Whether you envision a home office, a playroom, or additional living space, the possibilities are endless.

Situated in a friendly neighbourhood, this property is close to local amenities, schools, and parks, making it an excellent choice for families.

With its modern design and practical features, this mid-terrace house on Eleanor Street is a fantastic opportunity for anyone looking to settle in Sheffield. Don't miss your chance to make this lovely house your new home or investment.

Main Particulars

Guide Price £165,000 - £175,000

Nestled on the charming Eleanor Street in Sheffield, this delightful three-bedroom mid-terrace house offers a perfect blend of modern living and comfort.

Built in 2008, the property boasts a well-presented interior that is sure to impress. The spacious layout is ideal for a small family seeking a welcoming home or for those considering a buy-to-let investment.

As you step inside, you will be greeted by a bright and airy atmosphere, with ample space for relaxation and entertaining.

The property features three generously sized bedrooms, providing plenty of room for family members or guests.

The well-appointed kitchen and living areas create a warm and inviting environment, perfect for everyday living.

One of the standout features of this home is the garage, which not only offers convenient parking but also presents an exciting opportunity for a potential garage conversion, allowing you to tailor the space to your needs. Whether you envision a home office, a playroom, or additional living space, the possibilities are endless.

Situated in a friendly neighbourhood, this property is close to local amenities, schools, and parks, making it an excellent choice for families.

With its modern design and practical features, this mid-terrace house on Eleanor Street is a fantastic opportunity for anyone looking to settle in Sheffield. Don't miss your chance to make this lovely house your new home or investment.

Front -

Living Room - 4.48 x 3.47 (14'8" x 11'4") -

Kitchen/Diner - 3.53 x 4.15 (11'6" x 13'7") -

Downstairs Wc -

Master Bedroom - 2.92 x 4.49 (9'6" x 14'8") -

Bathroom - 2.56 x 1.66 (8'4" x 5'5") -

Second Bedroom - 2.56 x 2.92 (8'4" x 9'6") -

Third Bedroom - 1.98 x 1.96 (6'5" x 6'5") -

Garden -

Garage -

Kitchen/Diner



Living Room



Downstairs
WC

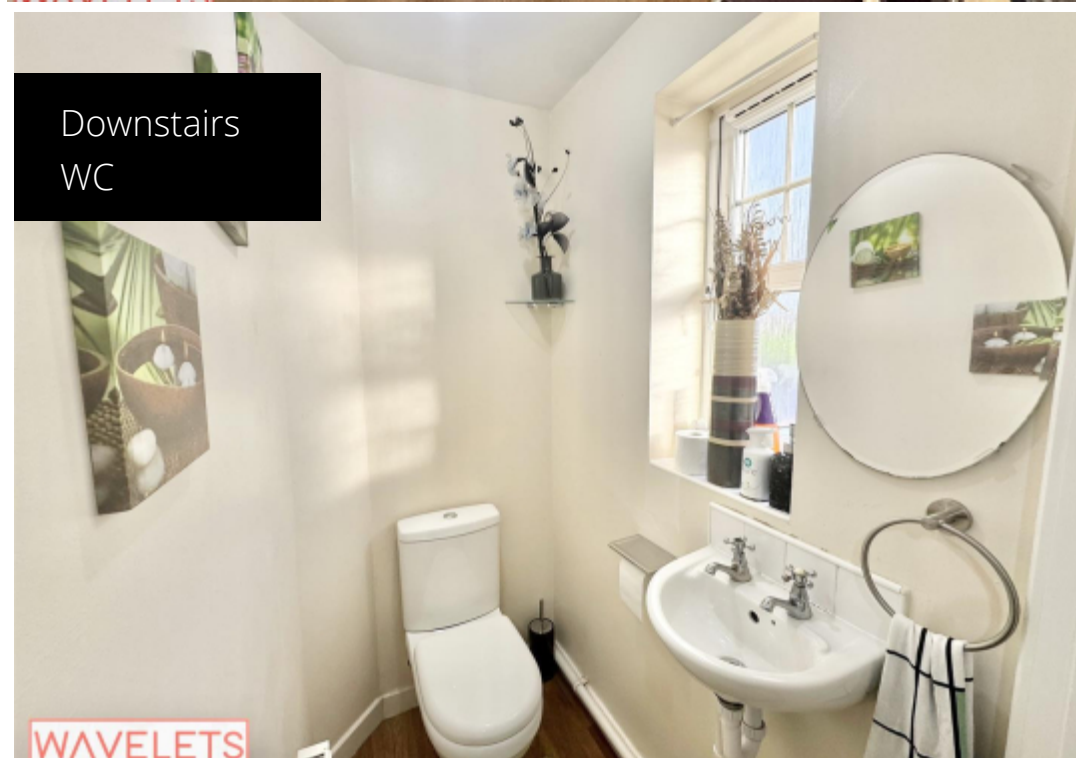




Image not found

This floorplan is for illustrative purposes only and the location of doors, windows and other items are approximate.

Telephone: 0114 470 1013



www.waveletsproperty.co.uk